



  
**REGNUM**  
CARYA

FACTS  
AND  
INFORMATION

SUMMER 2025  
25 April - 31 October





## Contents

General Information	03
Services & Facilities	04 - 06
Room Essentials	07
Rooms	08 - 15
Villas	16 - 23
Room Comparison	24 - 25
Exclusive Hospitality Services	26
Food & Beverage	27 - 32
Entertainment & Activities	33
Family	34
Kids & Teens	35
Well-Being	36
Fitness	37
Pools & Beach	38 - 39
Golf	40 - 41
M.I.C.E. & Weddings	42 - 43
Football	44
Loyalty	45
Local Attractions	46
Privilege Services	47
Health, Safety & Environment	48
About Regnum Carya	49 - 50



# WELCOME TO REGNUM CARYA

A true gift to the world of tourism from Belek, Antalya, Turkey.  
The luxury 5-star all-inclusive resort presents an extraordinary new holiday platform through its tailor-made services and exquisite surroundings.

## Location

Located on the Mediterranean coast in the Antalya-Belek tourism center

## Distance

The hotel is 30 km from Antalya International Airport, 500 m from Carya Golf Club, 3,5 km from National Golf Club and 2 km from The Land of Legends Theme Park

## Airport Transportation Types

VIP Transfer, Helicopter or taxi

## Check-in Policy

Check-in time is 3.00 p.m. hotel time. If you arrive early (until your room is ready) or if you wish to check out late, we would be delighted to accommodate you in the Regnum Lounge, which is equipped with showers and lockers. Certain room type requests may not be available prior to 3.00 p.m. hotel time. (Not guaranteed due to high volume of occupancy)

## Check-out Policy

Check-out is at 12.00 noon time. If you require late check-out, please contact the reception before 10.00 a.m. on the day of your departure, we will do our best to accommodate your request. Extra charges may apply depending on the extended check-out time and availability. Check-outs after 6.00 p.m. will be charged as one night's room fee. In case your room is unavailable for late check-out, we will be pleased to accommodate you at Regnum Lounge, where locker and shower facilities are available for your convenience.

## Early Check-in Late Check-out Policy (subject to availability)

Early arrival before 8.00 a.m. or late departure after 6.00 p.m. will be charged at 100% of the daily room rate.

## Spoken Languages

Turkish, English, Russian, German

## Accepted Credit Cards

Visa, Master Card, Eurocard, American Express

## Currency

Turkish Lira (TRY/₺) is the currency of Turkey. Euro (EUR/€), US Dollar (USD/\$), British Pound Sterling (GBP/£) are accepted as cash.

## Climate

Antalya / Belek has a typical Mediterranean climate.

## Voltage

The hotel operates on 220 volts / 50 hertz

## Wireless Internet Access

Complimentary wireless internet service is offered to all guests in their rooms and within the hotel area.

## Visitor Policy

Visitors are permitted in the lobby for up to 30 minutes between 10.00 a.m. and 6.00 p.m. They must present a passport or ID upon arrival and are not allowed in guest rooms. Guests are responsible for their visitors at all times. Stays over 30 minutes will incur a daily usage charge.

## Pet Policy

Pets are not accepted in the rooms or in the common areas of the hotel.

## Smoking Policy

Smoking is prohibited in all the rooms and all public areas of the hotel. Smoking is only allowed outdoors, on the balconies or the terrace.

## Responsible Drinking Policy

Alcohol will only be served to guests who are over the age of 18. If a guest seems younger than 18, a photo identification will be requested. Any guest who appears to be drunk will not be served any alcohol or admitted to any public areas of the hotel.

## Age Requirement Policy

Guests must be 18 years or older and must have valid identification to reserve and check into a room alone.

## Non-Hotel Services

Except for business partners of Regnum Hotel, products or services purchased or rented outside the facility are not permitted for use or service within the facility.

## Other Policies

Riding bicycles, rollerblades, skateboards, skates, in-line skates, hoverboards, or other conveyances in all indoor spaces is not allowed. Use of drones or camera drones in hotel areas are prohibited.





# SERVICES & FACILITIES

A journey to the summit of luxury in the heart of nature.

## Welcoming Services

- Handcrafted cocktail, fresh orange juice and sparkling wine during check-in
- Chocolate-covered strawberries
- Check-in procedures organized by welcome assistants
- Accompanying all guests to their rooms
- Food & Beverage room amenities on arrival day
- Luggage service
- Valet parking service
- Car wash service (upon request)
- Complimentary bottled water, wet wipes and hanging car air freshener for the guest's vehicle at departure time.

## Privilege Services\*

- Free entrance and shuttle service to The Land of Legends Theme Park\*
- Real Madrid Football School
- Vip Airport Transfer
- Helicopter Transfer

## Guest Services and Facilities

- 24-hour Regnum Assist Services
- (888 or Whatsapp line +90 555 057 07 07)
- Multi-lingual staff
- Daily housekeeping and turn-down service
- Mini bar restocked daily
- Complimentary birthday cake for 2 pax
- Safety Deposit Boxes at Reception
- Umbrella service on rainy days
- Wireless Internet access
- Shuttle to Carya & National Golf Clubs
- Walk-in restaurants and bars
- Entertainment shows and activities
- Tennis and basketball courts
- Water Park and beach
- Kids Club
- Indoor and outdoor pools
- Hammam and sauna
- Fitness Club
- Lounge for early check-in and late check-out
- Computer, photocopying, printing and scanning service in Business Centre
- ATM machine

## Extra Charge Guest Services

- All Spa treatments and services
- Beauty center services and cosmetics
- Laundry & dry cleaning services
- Daily pavilion (cabana) rental
- In-room dining services
- Wine list & selected spirits
- Reservation required dinner restaurants
- Private coaching lessons
- Private butler and chef service
- Baby sitting (for at least 2 years old babies)
- Game Center
- Meeting rooms / banquet facilities
- Electric car vehicle charging station
- Water sports
- Floodlit tennis court
- Retail shops, hairdresser, market, shisha
- Photography and florist services
- Car, bicycle and golf car rental
- Helicopter & yacht rental
- Private Medical services
- Pharmacy services
- Lunch box
- Visitors of hotel guests

\*Terms and conditions apply. Please refer to page 47.





## SERVICES & FACILITIES

### Disability & Accessibility Services

- Wheelchair and electric wheelchair allocation
- Unpacking and packing service to single disabled guests
- Free of charge in-room breakfast service to single disabled guests
- Assisting the guests by serving the food in buffet restaurant
- Reserved tables at Buffet Restaurant
- Reserved sun lounge area at the beach
- Wheelchair accessible beach
- In-door shuttle with two seater mobility scooter
- In-door pool lift chair
- Wheelchair-accessible restrooms
- Elevator to all floors
- In-resort shuttle with wheelchair ramp
- Accessible guestrooms with 104 cm wide entrance

### Honeymoon Services

- Private greeting & check-in with fresh flowers
- Romantic room decoration
- Romantic bathtub with rose petals and scented candles
- Complimentary bottle of sparkling wines, chocolate-dipped strawberries and macarons
- Complimentary in-room breakfast service at preferred day
- Romantic table decoration for dinner at the preferred reservation-only restaurants in Regnum Carya.
- 15 % discount on Greendoor Spa treatments

### Les Clefs d'Or® Concierge\*

- Our concierge services are provided by our staff who are members of Les Clefs d'Or® International.
- Travel arrangements
- Scheduled and charter flights ticket arrangement
- Airport transfers
- Luxury car and supercar rental
- Private jet and helicopter
- Formal limousine, yacht charter
- Concert & festival tickets
- Marriage proposal organization
- Special events transportation
- VIP reservations
- Mail or luggage delivery management
- Appointments with the doctor or other specialists.
- Chauffeur services
- Personal shopping
- Personal concierge (errand services)
- Private butler service
- Private security service
- Information about local attractions, activities, tours, night clubs, hotels, restaurants or places



\*Extra charges may apply.





# ACCESS TO REGNUM THE CROWN (OPENING JUNE 2025)

### Complimentary Services & Facilities

Reception Lobby Bar, Lobby Lounge Bar, Club & Lounge, Indoor Patisserie, Walk-in restaurants (Mexican Restaurant, Healthy Restaurant, Wine-Tapas Restaurant, American Diner) Turkish Coffeehouse, Coffee Shop, Brasserie, Beach Food Court, Main Pool, Kids Pool, Chilled Pool

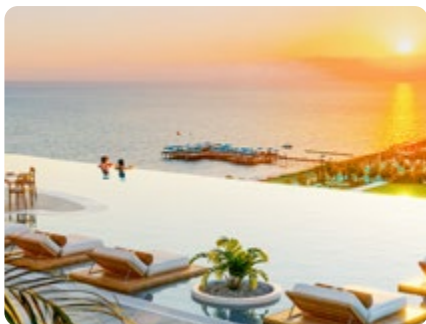
### Extra Charge Services & Facilities

- Infinity Pool 18+ (Entrance Fee)  
Included sun lounger, lunch and beverage service.
- Rooftop Fitness Club 18+ pp 30 € daily
- Caribbean Pool access pp 30 € daily
- Riviera Beach Club\* (Entrance Fee)  
Included sun lounger, breakfast, lunch and beverage service)

### Extra Charge Restaurants

- Rooftop Restaurant & Bar 18+ (Menu price)
- A la Carte Restaurants\*
- Breakfast pp 30 € (Maia, Riviera)
- Lunch pp 40 € (Riviera, Greek)
- Dinner pp 40 €. (Pan-Asian, Slavic, Arabic, Maia, Greek, Riviera)

\*0-12 years old complimentary



Rooftop Infinity Pool



Pan-Asian Restaurant



Lobby Bar





## ACCOMMODATION ROOM ESSENTIALS & AMENITIES

### FEATURES

- Bedroom chairs and table set
- Bedside reading light
- Bolster pillow bedroom bench
- Sheer and blackout drapes
- Work / writing desk with adjustable lamp
- Custom-made imported wood flooring
- Balcony / terrace with outdoor sofa set

### BEDDING

- Signature Regnum bed
- Super king size bed (2,0 x 2,2 m)
- Single full size bed (1,4 x 2,2 m)
- Non-allergenic king pillow (60 x 90 cm)
- Non-allergenic queen pillow (50 x 70 cm)
- Signature 100% cotton REGNUM linen set
- Pillow menu

### BATHROOM

- Full marble bathroom with enclosed rain shower
- Separate bathtub, separate toilet
- Double sink vanity
- Bvlgari® bath & shower products
- Baby bath products
- Makeup mirror with lights
- Hair dryer

### DRESSING ROOM

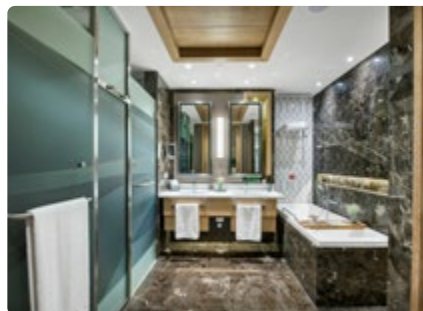
- Full length mirror
- Wood hangers
- Luggage rack
- Iron and ironing board
- Electronic safe box
- Pouf seat

### TECH

- LG® 55" mirror / LED IP TV
- Cisco® IP phone
- Wireless internet access
- Media Hub (Network, HDMI, Audio, USB, UK & US electrical sockets)

### SERVICES & AMENITIES

- Welcome amenities prepared by F&B
- Daily housekeeping and turn-down service
- Mini bar restocked daily
- Nespresso® coffee machine





## JADE ROOM

Land View- Sea View - Partial Sea View | Main Building | 62 sq m

### MAXIMUM OCCUPANCY

- 3 Adults + 1 Child

### FEATURES

- 1 Bedroom
- Separate dressing room
- Bedroom chairs and table set
- Work / writing desk with adjustable lamp
- Bolster pillow bedroom bench
- Sheer and blackout drapes
- Custom-made imported wood flooring
- Balcony with sofa set (12 sq m)

### BEDDING

- 1 Super king bed or 2 single full beds
- Crib (available upon request)
- Rollaway bed (available upon request)
- Pillow menu

### BATH

- Marble bathroom with enclosed rain shower, bathtub, separate toilet
- Double sink vanity
- Bvlgari® bath & shower products

### TECH

- LG® 55" mirror IP TV
- Bose® TV speaker
- Cisco® IP phone
- Wireless internet access
- Media hub

### SERVICES & AMENITIES

- Welcome amenities prepared by F&B
- Daily housekeeping and turn-down service
- Mini bar restocked daily
- Nespresso® coffee machine
- Iron and ironing board



Bathroom



Dressing Room





## JADE JUNIOR

Partial Sea View | Main Building | 62 sq m  
**Online Sales Only**

### MAXIMUM OCCUPANCY

- 3 Adults + 1 Child

### FEATURES

- 1 Bedroom
- Bedroom chairs and table set
- Work / writing desk with adjustable lamp
- Bolster pillow bedroom bench
- Sheer and blackout drapes
- Custom-made imported wood flooring
- Fitted wardrobe
- Balcony with sofa set (12 sq m)

### BEDDING

- 1 Super king bed
- Crib (available upon request)
- Rollaway bed (available upon request)
- Pillow menu

### BATH

- Marble bathroom
- Separate enclosed rain shower
- Separate toilet
- Bvlgari® bath & shower products

### TECH

- LG® 55" mirror IP TV
- Bose® TV speaker
- Cisco® IP phone
- Wireless internet access
- Media hub

### SERVICES & AMENITIES

- Welcome amenities prepared by F&B
- Daily housekeeping and turn-down service
- Mini bar restocked daily
- Nespresso® coffee machine
- Iron and ironing board



Bathroom



Bedroom





## JADE SENIOR

Partial Sea View | Main Building | 62 sq m  
**Online Sales Only**

### MAXIMUM OCCUPANCY

- 3 Adults + 1 Infant

### FEATURES

- 1 Bedroom
- Bedroom chairs and table set
- Work / writing desk with adjustable lamp
- Bolster pillow bedroom bench
- Sheer and blackout drapes
- Custom-made imported wood flooring
- Fitted wardrobe
- Balcony with sofa set (12 sq m)

### BEDDING

- 1 Super king bed
- Crib (available upon request)
- Rollaway bed (available upon request)
- Pillow menu

### BATH

- Marble bathroom with enclosed rain shower, separate toilet
- Double sink vanity
- Mirror TV
- Freestanding whirlpool bathtub
- Bvlgari® bath & shower products

### TECH

- LG® 55" mirror IP TV
- Bose® TV speaker
- Cisco® IP phone
- Wireless internet access
- Media hub

### SERVICES & AMENITIES

- Welcome amenities prepared by F&B
- Daily housekeeping and turn-down service
- Mini bar restocked daily
- Nespresso® coffee machine
- Iron and ironing board



Bathroom



Bedroom





## JADE FAMILY

Two Bedrooms | Partial Sea View | Main Building | 125 sq m

### MAXIMUM OCCUPANCY

- 5 Adults + 1 Child

### FEATURES

- 2 Bedrooms
- 1 Separate dressing room
- Bedroom chairs and table set
- Work / writing desk with adjustable lamp
- Bolster pillow bedroom bench
- Sheer and blackout drapes
- Custom-made imported wood flooring
- Oversized private balcony / terrace with sofa set, sun loungers and umbrella (24 - 36 sq m)

### BEDDING

- 1 Bedroom x 1 super king bed
- 1 Bedroom x 2 single full beds
- Crib (available upon request)
- Rollaway bed (available upon request)
- Pillow menu

### BATH

- Marble bathroom with enclosed rain shower, bathtub, separate toilet
- Double sink vanity
- Bvlgari® bath & shower products
- 1 Additional guest bathroom with enclosed rain shower and separate toilet

### TECH

- 2 LG® 55" mirror IP TV
- Bose® TV speaker
- Cisco® IP Phone
- Wireless internet access
- Media hub

### SERVICES & AMENITIES

- Welcome amenities prepared by F&B
- Daily housekeeping and turn-down service
- Mini bar restocked daily
- Nespresso® coffee machine
- Iron and ironing board



Bedroom



Bathroom



Dressing Room





## JADE SUITE

One Bedroom | Sea View | Main Building | 125 sq m

### MAXIMUM OCCUPANCY

- 4 Adults + 1 Infant

### FEATURES

- 1 Bedroom
- Living room with sitting area
- Separate dressing room
- Bedroom chairs and table set
- Work / writing desk with adjustable lamp
- Bolster pillow bedroom bench
- Sheer and blackout drapes
- Custom-made imported wood flooring
- Open and glazed balconies with sofa set (12 + 8 sq m)

### BEDDING

- 1 Super king bed
- Crib (available upon request)
- Rollaway bed (available upon request)
- Pillow menu

### BATH

- 2 Bathrooms
- Marble bathroom with enclosed rain shower, bathtub, separate toilet
- Double sink vanity
- Bvlgari® bath & shower products

### TECH

- 2 LG® 55" mirror IP TV
- Bose® TV speaker
- Cisco® IP phone
- Wireless internet access
- Media hub

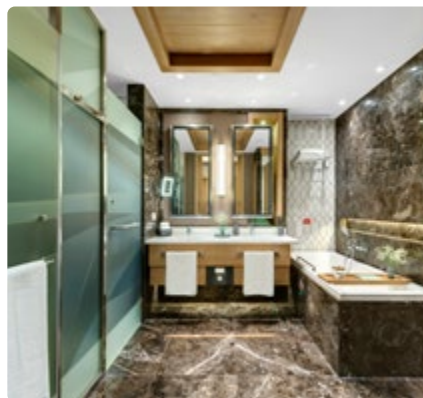
### SERVICES & AMENITIES

- Welcome amenities prepared by F&B
- Daily housekeeping and turn-down service
- Mini bar restocked daily
- Nespresso® coffee machine
- Iron and ironing board

\*Please also see Exclusive Services page 26.



Living Room



Bathroom



Dressing Room





## PEARL POOL ROOM

Shared Pool & Garden View | 62 sq m

### MAXIMUM OCCUPANCY

- 3 Adults + 1 Child

### FEATURES

- 1 Bedroom
- Separate dressing room
- Bedroom chairs and table set
- Work / writing desk with adjustable lamp
- Bolster pillow bedroom bench
- Sheer and blackout drapes
- Custom-made imported wood flooring
- Terrace with outdoor sofa set, sun loungers and umbrella (12 sq m)
- Direct access to shared pool

### BEDDING

- 1 Super king bed or 2 single full beds
- Crib (available upon request)
- Rollaway bed (available upon request)
- Pillow menu

### BATH

- Marble bathroom with enclosed rain shower, bathtub, separate toilet
- Double sink vanity
- Bvlgari® bath & shower products

### TECH

- LG® 55" mirror IP TV
- Cisco® IP phone
- Wireless internet access
- Media hub

### SERVICES & AMENITIES

- Welcome amenities prepared by F&B
- Daily housekeeping and turn-down service
- Mini bar restocked daily
- Nespresso® coffee machine
- Iron and ironing board



Dressing Room



Bathroom



Shared Pool





## PEARL POOL FAMILY

Two Bedrooms | Shared Pool & Garden View | 124 sq m



### MAXIMUM OCCUPANCY

- 6 Adults + 1 Child + 1 Infant

### FEATURES

- 2 Bedrooms
- 2 Separate dressing rooms
- Bedroom chairs and table set
- Work / writing desk with adjustable lamp
- Bolster pillow bedroom bench
- Sheer and blackout drapes
- Custom-made imported wood flooring
- Terrace with outdoor sofa set, sun loungers and umbrella (24 sq m)
- Direct access to shared pool

### BEDDING

- 1 Bedroom x 1 super king bed
- 1 Bedroom x 2 single full beds
- Crib (available upon request)
- Rollaway bed (available upon request)
- Pillow menu

### BATH

- 2 Bathrooms
- Marble bathroom with enclosed rain shower, bathtub, separate toilet
- Double sink vanity
- Bvlgari® bath & shower products

### TECH

- 2 LG® 55" mirror IP TV
- Cisco® IP phone
- Wireless internet access
- Media hub

### SERVICES & AMENITIES

- Welcome amenities prepared by F&B
- Daily housekeeping and turn-down service
- Maxi bar restocked daily
- Nespresso® coffee machine
- Iron and ironing board

\*Please also see Exclusive Services page 26.



Bedroom



Dressing Room & Bathroom



Shared Pool





## PEARL POOL SUITE

One Bedroom | Shared Pool & Garden View | 125 sq m



### MAXIMUM OCCUPANCY

- 4 Adults + 1 Infant

### FEATURES

- 1 Bedroom
- Living room with sitting area
- Separate dressing room
- Bedroom sofa set with table
- Work / writing desk with adjustable lamp
- Bolster pillow bedroom bench
- Sheer and blackout drapes
- Custom-made imported wood flooring
- Terrace with outdoor sofa set, dining area, swing sofa, sun loungers and umbrella (24 sq m)
- Direct access to shared pool

### BEDDING

- 1 Super king bed
- Crib (available upon request)
- Rollaway bed (available upon request)
- Pillow menu

### BATH

- Marble bathroom with enclosed rain shower, bathtub, separate toilet
- Double sink vanity, mirror TV
- Bvlgari® bath & shower products
- 1 Additional guest bathroom with enclosed rain shower and separate toilet

### TECH

- 2 LG® 55" mirror IP TV
- Cisco® IP phone
- Wireless internet access
- Media hub

### SERVICES & AMENITIES

- Welcome amenities prepared by F&B
- Daily housekeeping and turn-down service
- Mini bar restocked daily
- Nespresso® coffee machine
- Iron and ironing board

\*Please also see Exclusive Services page 26.



Living Room



Dressing Room & Bathroom



Shared Pool





# SAPPHIRE VILLA

Three Bedrooms | Golf & Pool View | Private Villa | 400 sq m



## MAXIMUM OCCUPANCY

- 7 Adults + 2 Children + 1 Infant

## INDOOR FEATURES

- 3 Bedrooms
- Living room with dining area
- Fully equipped kitchenette, washing machine
- 2 Separate dressing rooms
- Bedroom sofa set with table
- Work / writing desk with adjustable lamp
- Bolster pillow bedroom bench
- Sheer and blackout drapes
- Custom-made imported wood flooring

## OUTDOOR FEATURES

- Terrace with outdoor sofa set, dining area, swing sofa, sun loungers and umbrella (100 sq m)
- Extra charge heatable\* private pool (140 sq m)
- Villa + garden & pool size: 400+500 sq m

## BEDDING

- 1 Bedroom x 1 super king bed (2 x 2,2 m)
- 1 Bedroom x 2 single beds (1,4 x 2,2 m)
- 1 Bedroom x 1 king bed (1,8 x 2 m)
- Crib (available upon request)
- Rollaway bed (available upon request)
- Pillow menu

## BATH

- 3 Bathrooms
- 1 Marble bathroom with enclosed rain shower, bathtub, separate toilet
- Double sink vanity
- 2 Marble bathrooms with enclosed rain shower and separate toilet
- Bvlgari® bath & shower products

## TECH

- 4 LG® 55" mirror IP TV
- Cisco® IP phone
- Apple® TV box\*\*
- Wireless internet access
- Media hub

## SERVICES

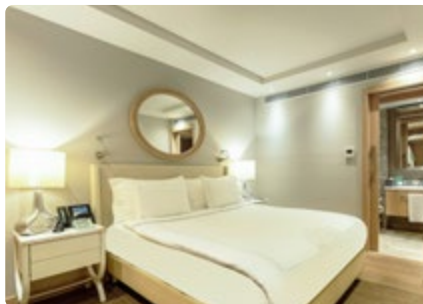
- Welcome amenities prepared by F&B
- Daily housekeeping and turn-down service
- Maxi bar restocked daily
- Nespresso® coffee machine
- Iron and ironing board

\*Please also see Exclusive Services page 26.

\*Please ask your assistant for pool heating and cost information. \*\*Upon request.



Bedroom



Bedroom (King Bed)



Living Room





# EMERALD VILLA

Three Bedrooms | Pool View | Private Villa | 600 sq m



## MAXIMUM OCCUPANCY

- 7 Adults + 2 Children + 1 Infant

## INDOOR FEATURES

- 3 Bedrooms
- Living room with dining area
- Fully equipped private kitchen, washing machine
- 1 Separate dressing room
- Bedroom chairs and table set
- Work / writing desk with adjustable lamp
- Sheer and blackout drapes
- Custom-made imported wood flooring

## OUTDOOR FEATURES

- Terrace with outdoor sofa set, dining area, swing sofa, sun loungers and umbrella (120 sq m)
- Extra charge heatable\* private pool (120 sq m)
- Villa + garden & pool size: 600+800 sq m

## BEDDING

- 1 Bedroom x 1 super king bed (2 x 2,2 m)
- 2 Bedrooms x 2 single full beds (1,4 x 2,2 m)
- Crib (available upon request)
- Rollaway bed (available upon request)
- Pillow menu

## BATH

- 3 Bathrooms
- 1 Marble bathroom with enclosed rain shower, bathtub, separate toilet
- Double sink vanity
- Sauna and mirror TV in master bathroom
- 2 Marble bathrooms with enclosed rain shower and separate toilet
- Bvlgari® bath & shower products

## TECH

- 4 LG® 55" IP TV (3 mirror)
- Cisco® IP phone
- Apple® TV box
- Wireless internet access
- Media hub

## SERVICES & AMENITIES

- Welcome amenities prepared by F&B
- Daily housekeeping and turn-down service
- Maxi bar restocked daily
- Nespresso® coffee machine
- Iron and ironing board

\*Please also see Exclusive Services page 26

\*Please ask your assistant for pool heating and cost information.



Living Room & Separate Kitchen



Bathroom & Sauna



Dressing Room





Master Bedroom

# EMERALD VILLA

Three Bedrooms | Pool View | Private Villa | 600 sq m



Living Room



2<sup>nd</sup> Bedroom



Kitchen



3<sup>rd</sup> Bedroom





# TIARA VILLA

Five Bedrooms | Golf & Pool View | Private Duplex Villa | 1500 sq m



## MAXIMUM OCCUPANCY

- 12 Adults

## INDOOR FEATURES

- 5 Bedrooms
- Living room with fireplace, sitting and formal dining area
- Fully equipped Gaggenau® kitchen, washing machine
- Fitness room, massage room and sauna area on the ground floor
- 4 Separate dressing rooms
- Bedroom sofa set with table
- Work / writing desk with adjustable lamp
- Bolster pillow bedroom bench
- Sheer and blackout drapes
- Custom-made imported wood flooring
- Underfloor heating

## OUTDOOR FEATURES

- Extra charge heatable\* private pool (200 sq m), kids pool (5 sq m), outdoor whirlpool
- Terrace with outdoor sofa set, dining area, swing sofa sun loungers and umbrellas (120 sq m)
- Villa + garden & pool: 1500+1300 sq m

## BEDDING

- 1st floor:
  - 2 Bedrooms x 1 super king bed (2 x 2,2 m)
  - 1 Bedroom x 2 single full beds (1,4 x 2,2 m)
- Ground floor:
  - 1 Bedroom x 1 king bed (1,8 x 2 m)
  - 1 Bedroom x 2 single full beds (1,4 x 2,2 m)
- Crib (available upon request)
- Rollaway bed (available upon request)
- Pillow menu

## BATH

- 5 Bathrooms
- Marble bathroom with enclosed rain shower, bathtub, mirror TV separate toilet

- Double sink vanity
- In-ground whirlpool bathtub and bioethanol fireplace in master bathroom
- Bvlgari® bath & shower products

## TECH

- 78" Samsung® Curve 4K TV in living room
- 4 LG® 55" mirror IP TV + 2 LG 42" IP TV
- Cisco® IP phone
- Apple® TV box
- Wireless internet access
- Media hub

## SERVICES

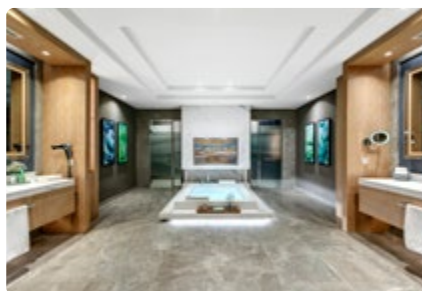
- Welcome amenities prepared by F&B
- Daily housekeeping and turn-down service
- Maxi bar restocked daily
- Nespresso® coffee machine
- Iron and ironing board

\*Please also see Exclusive Services page 26.

\* Please ask your assistant for pool heating and cost information.



Kitchen



Bathroom



Dressing Room





# TIARA VILLA

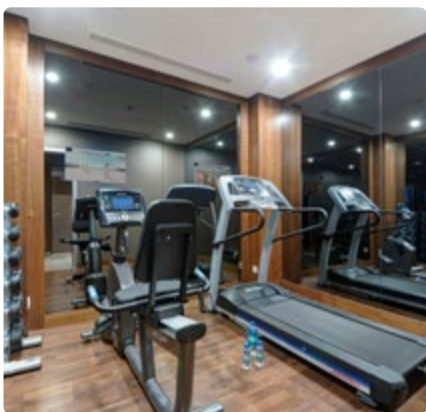
Five Bedrooms | Golf & Pool View | Private Duplex Villa | 1500 sq m



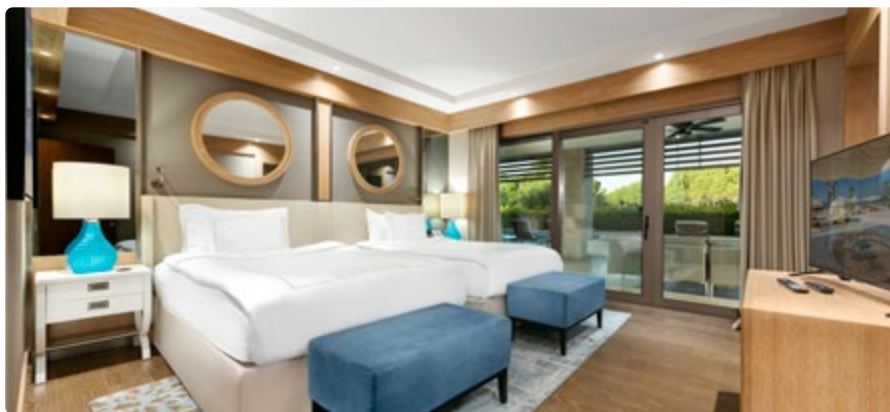
Living Room



Massage Room & Sauna



Fitness Room



2<sup>nd</sup> Bedroom



# CROWN VILLA

Six Bedrooms + Two Bedrooms | Golf & Pool View | Triplex Private Villa | 3500 sq m



## MAXIMUM OCCUPANCY

- 14 Adults

## INDOOR FEATURES

- 6 + 2 Bedrooms
- Additional 1<sup>st</sup> bedroom in The Cave facility, 2<sup>nd</sup> bedroom in the Playstation room with convertible sofa bed (1,4 x 2 m) and bathroom (upon request)
- 6 Separate dressing rooms
- Bedroom chairs and table set
- Bolster pillow bedroom bench
- Work / writing desk with adjustable lamp
- Sheer and blackout drapes
- Custom-made imported wood flooring
- 2 Living rooms with sitting area
- 1 Fireplace with fire pit
- Shiffini® design & fully equipped Gaggenau® kitchen and formal dining room
- Spa & Wellness area located on the ground floor
- Turkish hammam, sauna, steam room, shower, massage room, fitness room
- Panatta cardio and fitness equipment designed by "Pininfarina"
- 2nd floor with living room, outdoor terrace, barbecue, dining table, outdoor sofa set and umbrellas
- Private meeting & executive room
- Bulletproof windows
- Electric window blinds and roller shutters
- Laundry room, professional kitchen and security office
- Villa elevator, underfloor heating system

## OUTDOOR FEATURES

- Villa + garden & pool size: 3500+1500 sq m
- Extra charge heatable\* private pool (442 sq m)
- Pool bar, gazebo
- Terrace with outdoor sofa set, dining area, swing sofa, sun loungers and umbrellas (120 sq m)
- Passion® The Theatre Spa outdoor hot tub (3,8 x 2,28 x 1,16 m)

## BEDDING

- 2<sup>nd</sup> floor:
  - 1 Bedroom x 1 extra king bed (2 x 2 m)
- 1<sup>st</sup> floor:
  - 1 bedroom x 1 signature Crown bed (2,2 x 2,2 m)
  - 1 bedroom x 1 super king bed (2 x 2,2 m)
  - 1 bedroom x 2 single full beds (1,4 x 2,2 m)
- Ground floor:
  - 1 Bedroom (disabled) x 1 super king bed (2 x 2,2 m)
  - 1 bedroom x 2 single beds (1,4 x 2,2 m)
- Crib (available upon request)
- Rollaway bed (available upon request)
- Pillow menu

## BATH

- 8 Bathrooms
- Marble bathroom with enclosed rain shower
- Bathtub, mirror TV, double sink vanity, separate toilet
- In-ground Teuco seaside whirlpool bathtub 2,15x2,0 m, sauna and SensoWash® shower-toilet in master bathroom
- Bvlgari® bath & shower products

## THE CAVE (GROTTO) FACILITY

- Private sunbathing area on white sand
- Waterfall pool, hidden indoor heated pool, swim-up bar
- Cinema lounge with whirlpool, shower and toilet
- Whirlpool bedroom with round bed (ø 2,3 m) and private terrace

## TECH

- 88" / 78" Samsung® Curve 4K TV in living rooms
- Bang & Olufsen® home theatre system in living room
- 6 Samsung® 55" TV
- Cisco® IP phone
- Apple® TV box
- Smart room control system
- DJ set-up, sound & light system
- Playstation & game room
- Wireless internet access
- Media hub

## SERVICES & AMENITIES

- Welcome amenities prepared by F&B
- Private housekeeping service
- Maxi bar restocked daily
- Nespresso® coffee machine
- Iron and ironing board

\*Please also see Exclusive Services page 26.

\*Please ask your assistant for pool heating and cost information.





# CROWN VILLA

Six Bedrooms + Two Bedrooms | Golf & Pool View  
 Triplex Private Villa | 3500 sq m



Living Room



Meeting Room



Turkish Hammam



Kitchen & Dining Area





## CROWN VILLA THE CAVE

Unique hidden living space pool and bedroom in Grotto style



Cinema Lounge



Bedroom



Pool Bar



Swim-Up Bar



# ACCOMMODATION ROOM COMPARISON



Rooms	Size**	View	Bedroom	Living Room	Maximum Occupancy	Beds*	Shower / Bathtub	Location	Total
Jade Room Land View	62 sq m	Land	1	.	3 Adults + 1 Child	1 Double or 2 Single	1/1	Main Building	207
Jade Room Partial Sea View	62 sq m	Partial Sea	1	.	3 Adults + 1 Child	1 Double or 2 Single	1/1	Main Building	76
Jade Room Sea View	62 sq m	Sea	1	.	3 Adults + 1 Child	1 Double or 2 Single	1/1	Main Building	99
Jade Junior Room Online Sales Only	62 sq m	Partial Sea	1	.	3 Adults + 1 Child	1 Double	1/0	Main Building	12
Jade Senior Room Online Sales Only	62 sq m	Partial Sea	1	.	3 Adults + 1 Infant	1 Double	1/1 (1 Bathtub with Jacuzzi)	Main Building	12
Jade Family	125 sq m	Partial Sea	2	.	5 Adults + 1 Child	1 Double + 2 Single	2/1	Main Building	28
Pearl Pool Room	62 sq m	Garden & Shared Pool	1	.	3 Adults + 1 Child	1 Double or 2 Single	1/1	Pearl Pool	60
Pearl Pool Family	124 sq m	Garden & Shared Pool	2	.	6 Adults + 1 Child + 1 Infant	1 Double + 2 Single	2/2	Pearl Pool	24
Suites	Size**	View	Bedroom	Living Room	Maximum Occupancy	Beds*	Shower / Bathtub	Location	Total
Jade Suite	125 sq m	Sea	1	1	4 Adults + 1 Infant	1 Double	2/2	Main Building	8
Pearl Pool Suite	125 sq m	Garden & Shared Pool	1	1	4 Adults + 1 Infant	1 Double	2/1	Pearl Pool	11
Villas	Size***	View	Bedroom	Living Room + Kitchen	Maximum Occupancy	Beds*	Shower / Bathtub	Location	Total
Sapphire Villa	400 + 500 sq m (Heated pool 140sq m)	Golf & Garden Private Pool	3	1 + 1 (1 Kitchenette)	7 Adults + 2 Children + 1 Infant	2 x 1 Double + 1 x 2 Single	3/2	Sapphire Villas	13
Emerald Villa	600 + 800 sq m (Heated Pool 120 sq m)	Garden & Private Pool	3	1 + 1	7 Adults + 2 Children + 1 Infant	1 x 1 Double + 2 x 2 Single	3/1	Emerald Villas	4
Tiara Villa (Duplex)	1500 + 1300 sq m (Heated Pool 200 sq m)	Golf & Garden Private Pool	5	1 + 1	12 Adults	3 x 1 Double + 2 x 2 Single	5/3 (1 Bathtub with Jacuzzi)	Tiara Villas	2
Crown Villa (Triplex)	3500 + 1500 sq m (Heated Pool 442 sq m)	Golf & Garden Private Pool	6 + (2)	2 + 1	14 Adults	4 x 1 Double + 2 x 2 Single + 1 x 1 Round Bed + 1 x 1 Sofa Bed	8/5 (5 Bathtubs with Jacuzzi)	Crown Villa	1

\*Rollaway bed (1,0 x 2,0m) and crib (0,75 x 1,1m) - available upon request. \*\*Including balcony / terrace - all sizes are approximate. \*\*\*Villa & terrace + pool & garden - all sizes are approximate.



## ROOM AMENITIES & SERVICES

	Jade Room	Jade Room Partial Sea View	Jade Room Sea View	Jade Junior Room	Jade Senior Room	Jade Suite	Jade Family	Pearl Pool Room	Pearl Pool Family	Pearl Pool Suite	Sapphire Villa	Emerald Villa	Tiara Villa	Crown Villa
Digital key card system	✓	✓	✓	✓	✓	✓	✓	✓	✓	✓	✓	✓	✓	✓
Bvlgari® bath & shower products	✓	✓	✓	✓	✓	✓	✓	✓	✓	✓	✓	✓	✓	✓
Antibacterial liquid hand soap	✓	✓	✓	✓	✓	✓	✓	✓	✓	✓	✓	✓	✓	✓
Dental kit with Marvis® toothpaste	✓	✓	✓	✓	✓	✓	✓	✓	✓	✓	✓	✓	✓	✓
Enclosed rain shower	✓	✓	✓	✓	✓	✓	✓	✓	✓	✓	✓	✓	✓	✓
Bathtub and bathtub tray	✓	✓	✓		✓	✓	✓	✓	✓	✓	✓	✓	✓	✓
Jacuzzi					✓								✓	✓
Double sink vanity	✓	✓	✓		✓	✓	✓	✓	✓	✓	✓	✓	✓	✓
Hair dryer	✓	✓	✓	✓	✓	✓	✓	✓	✓	✓	✓	✓	✓	✓
Bathrobe and slippers	✓	✓	✓	✓	✓	✓	✓	✓	✓	✓	✓	✓	✓	✓
Makeup / shaving mirror with light	✓	✓	✓	✓	✓	✓	✓	✓	✓	✓	✓	✓	✓	✓
Bathroom products kit for men and women	✓	✓	✓	✓	✓	✓	✓	✓	✓	✓	✓	✓	✓	✓
Kids bathrobe, slippers, shampoo and lotion (0-12)	✓	✓	✓	✓	✓	✓	✓	✓	✓	✓	✓	✓	✓	✓
Lockable dressing room with luggage rack	✓	✓	✓			✓	✓	✓	✓	✓	✓	✓	✓	✓
Fitted wardrobe and luggage rack				✓	✓									
Iron and ironing board	✓	✓	✓	✓	✓	✓	✓	✓	✓	✓	✓	✓	✓	✓
Digital safe	✓	✓	✓	✓	✓	✓	✓	✓	✓	✓	✓	✓	✓	✓
Digital scale (upon request)	✓	✓	✓	✓	✓	✓	✓	✓	✓	✓	✓	✓	✓	✓
Full length mirror	✓	✓	✓	✓	✓	✓	✓	✓	✓	✓	✓	✓	✓	✓
Beach bag	✓	✓	✓	✓	✓	✓	✓	✓	✓	✓	✓	✓	✓	✓
Shoehorn, shoe shine sponge and shoe mitt	✓	✓	✓	✓	✓	✓	✓	✓	✓	✓	✓	✓	✓	✓
Clothes brush	✓	✓	✓	✓	✓	✓	✓	✓	✓	✓	✓	✓	✓	✓
Bathroom pouf seat	✓	✓	✓	✓	✓	✓	✓	✓	✓	✓	✓	✓	✓	✓
Cisco® IP phone	✓	✓	✓	✓	✓	✓	✓	✓	✓	✓	✓	✓	✓	✓
Bose® TV speaker system	✓	✓	✓	✓	✓	✓	✓							
Mirror / LED TV in bathroom					✓					✓		✓	✓	✓
Wireless internet	✓	✓	✓	✓	✓	✓	✓	✓	✓	✓	✓	✓	✓	✓
Media hub (ethernet, HDMI, audio and USB inputs)	✓	✓	✓	✓	✓	✓	✓	✓	✓	✓	✓	✓	✓	✓
UK and US electrical sockets	✓	✓	✓	✓	✓	✓	✓	✓	✓	✓	✓	✓	✓	✓
Air conditioning	✓	✓	✓	✓	✓	✓	✓	✓	✓	✓	✓	✓	✓	✓
Bedside reading lamp	✓	✓	✓	✓	✓	✓	✓	✓	✓	✓	✓	✓	✓	✓
Work / writing desk with adjustable lamp	✓	✓	✓	✓	✓	✓	✓	✓	✓	✓	✓	✓	✓	✓
Balcony / terrace sofa set	✓	✓	✓	✓	✓	✓	✓	✓	✓	✓	✓	✓	✓	✓
In-room fresh flowering plant	✓	✓	✓	✓	✓	✓	✓	✓	✓	✓	✓	✓	✓	✓
Pillow menu	✓	✓	✓	✓	✓	✓	✓	✓	✓	✓	✓	✓	✓	✓
Nespresso® coffee machine and kettle	✓	✓	✓	✓	✓	✓	✓	✓	✓	✓	✓	✓	✓	✓
Mini bar and snack bar	✓	✓	✓	✓	✓	✓	✓	✓	✓	✓	✓	✓	✓	✓
Welcome fruit on arrival	✓	✓	✓	✓	✓	✓	✓	✓	✓	✓	✓	✓	✓	✓
Milk for ages 0-6, Nesquik® for ages 7-12 in the mini bar	✓	✓	✓	✓	✓	✓	✓	✓	✓	✓	✓	✓	✓	✓
Turndown service with Godiva® chocolate	✓	✓	✓	✓	✓	✓	✓	✓	✓	✓	✓	✓	✓	✓
Newspapers printed in Turkey (upon request)	✓	✓	✓	✓	✓	✓	✓	✓	✓	✓	✓	✓	✓	✓

\*Terms & conditions apply. Please refer to page 47.  
\*\*Upon request.

# EXCLUSIVE SERVICES

Guest Assistant | Private Reception & Lounge  
Private Beach Club and Restaurant

Services & Amenities	Jade Suite	Pearl Pool Suite	Pearl Pool Family	Sapphire Villa	Emerald Villa	Tiara Villa	Crown Villa
Round trip VIP airport transfer* (7 nights min. stay)						✓	✓
Round trip helicopter transfer (7 nights min. stay / 4 pax)*						✓	✓
Private in room check-in				✓	✓	✓	✓
Check-in at Villa Lounge*		✓	✓				
Welcome F&B amenities	✓	✓	✓	✓	✓	✓	✓
Bvlgari® branded bath & shower products	✓	✓	✓	✓	✓	✓	✓
The Land of Legends Theme Park (entrance & transfer)	✓	✓	✓	✓	✓	✓	✓
PlayStation** (upon request & daily allocation)				✓	✓	✓	✓
Dom Pérignon® Champagne (on arrival day)				✓	✓	✓	✓
Moët & Chandon Impérial Brut Champagne (on arrival day)		✓	✓				
Free in-room dining service				✓	✓	✓	✓
Laundry services / dry cleaning						✓	✓
Laundry services / washing, ironing				✓	✓	✓	✓
Alia & Riviera Beach Clubs (beach, breakfast, lunch and dinner)	✓	✓	✓	✓	✓	✓	✓
All A la Carte restaurants at Regnum Carya and Regnum The Crown (Please note that Rooftop Restaurant & Bar, Infinity Pool, Teppanyaki, dry aged steaks, premium food and beverage are extra charged)	✓	✓	✓	✓	✓	✓	✓
Beach pavilions and F&B service				✓			
Pier pavilions and F&B service					✓	✓	
Crown pier pavilion and F&B service							✓
Golf car allocation				✓	✓	✓	✓
Private butler service (9.00 a.m. - 9.00 p.m.)				✓	✓	✓	✓
Private chef & bartender							✓
Private chauffeur							✓
Private luxury car transportation service with chauffeur							✓

\*Terms & conditions apply. Please refer to page 47.

\*\*Please be advised that damage to or loss of the console / player will be charged €150 / € 1000 fee.





## DINING

24-Hour Dining Experience at Regnum Carya

Regnum Carya's master chefs always serve you the best flavours of your choice with 1 buffet, 2 child-friendly buffets, 10 fine dining restaurants, 4 casual dining restaurants, 1 patisserie & chocolatier, 1 Turkish bakery & patisserie and 24-hour in-room dining service.

### BUFFET DINING

Venue	Concept	Menu	Operating Hours	Location	Service Area & Details	Inclusive
Olive Restaurant	Live-action cooking stations, nightly themed buffet, wine boutique, patisserie & ice cream room, delicatessen & cheese room, bakery room, healthy & diet corner, fresh juice bar and Olive Premium full bar	Open Fine Buffet	Breakfast 6.30 a.m. - 11.00 a.m. Lunch 12.30 p.m. - 3.00 p.m. Dinner 6.00 p.m. - 10.00 p.m. Sunday Brunch 11.00 a.m. - 3.00 p.m.	Main building ground floor	Separate dining sections / glazed terrace & outdoor heated terrace	✓
Jr. Gourmet Restaurant	Child - friendly buffet, baby food corner & equipment, HIPP brand baby food Hipp (rabbit meat, beef and turkey meat varieties are not available in Turkey)	Open Buffet	Breakfast 6.30 a.m. - 11.00 a.m. Lunch 12.30 p.m. - 3.00 p.m. Dinner 6.00 p.m. - 10.00 p.m.	Olive Restaurant	Separated dining section	✓
Chuckles Kids Club Restaurant	Child-friendly buffet baby food corner & equipment Hipp (rabbit meat, beef and turkey meat varieties are not available in Turkey)	Open Buffet	Lunch 12.00 p.m. - 2.00 p.m. Tea time 4.00 p.m. - 5.00 p.m. Dinner 6.00 p.m. - 8.00 p.m.	Chuckles Kids Club	Separated dining section	✓

Restaurant and bar operating hours or days may change due to adverse weather conditions, technical reasons and guest requests.

# REGNUM CARYA



## FINE DINING\*

Venue	Concept	Menu	Operating Hours	Location	Reservation	Pricing
Tramonto	Modern Italian Cuisine regional Italian specialties, innovative pizza and pasta dishes	À la carte	Dinner 6.00 p.m. - 11.00 p.m.	Main building Lobby floor	Required 0-12 years old complimentary	PP 30 €
Kushimoto	Contemporary Japanese Cuisine & Sushi Bar	À la carte	Dinner 6.00 p.m. - 11.00 p.m.	Main building Lobby Floor	Required 0-12 years old complimentary	PP 40 €
Teppanyaki	Authentic Japanese cuisine cooked fresh in front of the guests	À la carte	Dinner 6.00 p.m. - 11.00 p.m.	Main building Lobby floor (in Kushimoto)	Required	Extra Charge (Menu Price)
Ubon	Modern Thai Cuisine	À la carte	Dinner 6.00 p.m. - 11.00 p.m.	Waterfall area	Required 0-12 years old complimentary	PP 30 €
Sevk-Et Steakhouse	Premium & dry aged hand cuts	À la carte	Dinner 6.00 p.m. - 11.00 p.m.	Clubhouse Building 1 <sup>st</sup> floor	Required 0-12 years old complimentary	PP 40 € (Dry aged extra charged)

\*Reservation is required. Dress code is smart casual. No age restrictions. All à la carte restaurants are extra charge for meetings and football groups. Restaurant and bar operating hours or days may change due to adverse weather conditions, technical reasons and guest requests.



Ristorante Tramonto Italian Restaurant



Ubon Thai Cuisine



Kız Ocakbaşı





## CASUAL DINING

Venue	Concept	Menu	Operating Hours	Location	Reservation	Inclusive
Köz Ocakbaşı	Traditional Turkish Grill & Kebab	À la carte	Dinner 6.00 p.m. - 11.00 p.m.	Main building Lobby Floor	Required (0-12 years old complimentary)	PP 30 €
Shamrock	Selection of international cuisine	À la carte	Late - Night Dining 10.00 p.m. - 7.00 a.m.	Main building Lobby Floor	Not required, walk-in	✓
Brazil	Selection of international cuisine & Brazilian Grill	À la carte	Dinner 6.00 p.m. - 11.00 p.m.	Main building lobby floor	Not required, walk-in	✓
Sandal Beach Restaurant	Selection of international, Turkish and Mediterranean cuisine – Grilled fish & Mezze	À la carte	Lunch 12.00 p.m. - 5.00 p.m. Dinner 6.00 p.m. - 11.00 p.m.	Beach	Not required, walk-in	✓
Alia Beach Club	International Beach Cuisine	À la carte	Breakfast 08.30 a.m. - 11.30 a.m.	Beach	Not required, walk-in (0-12 years old complimentary)	PP 30 €
Alia Beach Club	International Beach Cuisine	À la carte	Lunch 12.00 p.m. - 5.00 p.m.	Beach	Not required, walk-in (0-12 years old complimentary)	PP 40 €
Alia Beach Club	Selection of Turkish and Mediterranean cuisine	À la carte	Dinner 6.00 p.m. - 11.00 p.m.	Beach	Required (0-12 years old complimentary)	PP 40 €
Adult Beach Club 18+	Selection of international cuisine.	À la carte	Lunch 12.00 p.m. - 5.00 p.m.	Beach	Not required, walk-in	✓
Gusto	Selection of international cuisine	À la carte	Lunch 1.00 p.m. - 6.00 p.m.	Next to activity pool	Not required, walk-in	✓
Water Park Restaurant Bar	Selection of international cuisine	À la carte	Lunch 12.00 p.m. - 5.00 p.m.	Water Park	Not required, walk-in	✓
Clubhouse	Breakfast, selection of world cuisine	À la carte	Breakfast 08.00 a.m. - 11.00 a.m. Lunch 12.00 p.m. - 5.00 p.m.	National & Carya Golf Club	Not required, walk-in	Extra Charge Menu price*

## PÂTISSERIE & BAKERY

Macaroon Patisserie	Selection of French Macarons, international desserts and handmade Callebaut chocolates and Mövenpick ice cream	Pastry display case	All Day 10.00 a.m. - 10.00 p.m.	Main building ground floor	Not required, walk-in	✓
Nazar Bakery	Selection of bakery and Turkish Desserts, breakfast options, tea, coffee and soft drinks	Pastry display case	All Day 9.00 a.m. - 11.00 p.m.	Main building ground floor	Not required, walk-in	✓

Restaurant and bar operating hours or days may change due to adverse weather conditions, technical reasons and guest requests.  
\*0-12 years old complimentary.





## BARS & LOUNGES

For you to share special moments with your favourite people or to unwind alone with a cold drink on a hot day, we offer a wide selection of bars in various locations.

- 16 different types of bars
- Fully stocked in-room bar & variety of snacks
- Welcoming with Martini Rosé® & Martini Brut sparkling wine
- Drink service to tables and sun loungers
- Popular beverage brands
- Premium quality spirits & cordials
- Premium quality house wines
- Guinness® Draught Beer at Irish Bar
- Heartbrand® Algida ice cream in all outdoor bars (Magnum, Cornetto, Nogger, Twister flavours and more)
- 100% freshly squeezed orange juice and selection of fresh juices in all bars
- Regnum Signature roasted 100% Arabica Coffee Beans
- Exotic and premium loose-leaf teas from around the world
- Selection of Red Bull® energy drinks
- Coca Cola® Company products and Lipton Ice Teas
- San Pellegrino® mineral water & Erikli Water®

\*Wall's in UK / Inmarko in Russia / Langnese in Germany



Score Sports Bar



The Shamrock Irish Bar



# REGNUM CARYA

Venue	Concept	Menu	Operating Hours	Location	Service Area & Details	Inclusive
One Bar	Lobby Bar & Lounge	Full Bar	24 hours	Main building ground floor	Indoor lounge, outdoor heated terrace & bar counter	✓
Score Bar	Sports Bar	Full Bar	1.00 p.m. - 12.00 midnight	Main building ground floor	Indoor lounge, outdoor heated terrace & bar counter	✓
Green Bar	Sunken Pool Bar & Lounge	Full Bar	7.00 p.m. - 12.00 midnight	Main building ground floor terrace	Sunken lounge & bar in pool	✓
Leaf Lobby Bar	Bar & Lounge	Full Bar	8.00 a.m. - 12.00 midnight	Main building lobby floor	Indoor lounge, outdoor terrace & bar counter	✓
The Shamrock Bar	Irish Bar	Full Bar with Draught Guinness Beer & Dining	4.00 p.m. - 12.00 midnight	Main building lobby floor	Indoor lounge, outdoor terrace & bar counter	✓
Zing Bar	Juice & Smoothie Bar	Juices & Smoothies, Detox water, Teas & Coffees, Soft drinks	9.00 a.m. - 8.00 p.m.	Main building in spa center	Indoor lounge & bar counter	✓
Blue Bar	Pool Bar	Full Bar	9.00 a.m. - 7.00 p.m.	Main pool	Sun loungers, seating area & bar counter	✓
Gusto Bar	Pool Bar	Full Bar & Dining	9.00 a.m. - 7.00 p.m.	Next to activity pool	Sun loungers & seating area	✓
Clubhouse Bar	Bar & Lounge	Full Bar & Dining	8.00 a.m. - 8.00 p.m.	National & Carya Golf Club	Indoor dining area & outdoor terrace	Extra Charge
Aqua Cafe Bar	Pool Bar	Soft drinks, Teas & Coffees, Wine & Beer, Outdoor Dining	9.00 a.m. - 6.00 p.m.	Aquaworld Water Park	Sun loungers & seating area	✓
Water Park Restaurant & Bar	Pool Bar	Full Bar & Dining	9.00 a.m. - 6.00 p.m.	Aquaworld Water Park	Sun loungers & seating area	✓
Adult Beach Club 18+	Beach Bar	Full Bar & Dining	9.00 a.m. - 3.00 a.m.	Beach	Sun loungers, lounge & bar counter	✓
Adult Pool Bar	Swim-up Bar & Lounge	Full Bar	9.00 a.m. - 6.00 p.m.	Beach side	Sun loungers, lounge & bar counter	✓
Harbour Bar	Pier Bar	Full Bar	9.00 a.m. - 7.00 p.m.	Beach	Sun loungers, lounge & bar counter	✓
Palm Beach Club	Beach Bar	Full Bar & Dining	9.00 a.m. - 7.00 p.m.	Beach	Sun loungers, lounge & bar counter	✓
Alia Beach Club	Beach Bar	Full Bar & Dining	9.00 a.m. - 11.00 p.m.	Beach	Sun loungers, lounge & bar counter	Extra Charge

Restaurant and bar operating hours or days may change due to adverse weather conditions, technical reasons and guest requests.



Green Bar



Zing Vitamin Bar



One Lobby Bar



## HIGHLIGHTS OF LUXURY ALL INCLUSIVE BAR MENU

- 18 / 12 yrs Chivas Regal whisky
- Single Barrel Jack Daniels whiskey
- Jameson Black Barrel whiskey
- Glenfiddich single malt whisky
- Double Black Johnnie Walker whisky
- Grey Goose vodka
- Belvedere vodka
- Beluga vodka
- Hendricks gin
- Don Julio tequila
- Bacardi rum
- Havana rum
- Aperol apéritif
- Campari bitter
- Martini vermouths
- Jägermeister liqueur
- Baileys, Drambuie, Amaretto Liqueurs
- Kavaklıdere Egeo Wines
- Piccini Millerighe Wines
- Rémy Martin cognac vsop
- Martell cognac vsop
- Hennessy cognac vs
- Âlâ Raki, Beylerbeyi Göbek rakı
- Guinness Draught at Irish Bar
- Corona beer
- Heineken beer
- Budweiser beer
- Handcrafted & international cocktails and more...

## FULLY STOCKED IN ROOM BAR

- Nespresso coffee & tea set-up
- Carlsberg 330ml x 2
- White wine 187,5ml x 1
- Red wine 187,5ml x 1
- Uludağ mineral water 250ml x 2
- Coke 330ml x 2
- Coke sugar free 330ml x 2
- Fanta 330ml x 1
- Sprite 330ml x 1
- Red Bull® 250ml x 1
- Red Bull® Sugarfree 250ml x 1
- Lipton ice tea 330ml x 2
- Cappy juice 330ml x 2
- Erikli water 330ml x 4 glass bottled
- Erikli water 330ml x 2
- Erikli water 1L x 5
- Milk 200ml x 1 (0-6 yrs)
- Nesquik® milk 200ml x 1 (6-12 yrs)
- Crisps x 2
- Caramel Cake x 1
- Gold roasted peanuts
- Chocolate candies
- Chocolate bar
- Mint candies
- Haribo Goldbears
- Wafer
- Pizza cracker
- Light cracker

Minibar-restocked daily between 9.00 a.m. and 5.00 pm.

Due to the pandemic or customs regulations, there may be delays in the supply of domestic and imported products during certain periods. Service of imported products is subject to the supply of the official distributor.



Blue Bar



Palm Beach Club



Adult Pool Bar





## ENTERTAINMENT & ACTIVITIES

Guests at Regnum Carya can participate in a wide range of leisurely and recreational activities by day and enjoy the numerous lively events organized by night.

### Entertainment

- Exclusive stage shows and Concerts
- Themed Beach & Pool parties
- Sunset Happy Hour
- Live music

### Chuckles Kids & Teens Club

- Outdoor, indoor play grounds, activity rooms, workshops, cinema and shows.

### Game Center\*

- Bowling, billiards, board games, arcade games and electronic games

### Farm

- Visit Ali Baba's Farm for an unforgettable day feeding and interacting with animals!

### Aquaworld Water Park

- Crazy River, tube slides, body slides, raft slides, kids playground, wave pool, kids pool, baby pool, swimming pool.

### The Land of Legends Theme Park

- Unlimited entrance and free shuttle

### Fitness Club Activities

- Healthy back, stretching, skill bike, LesMills body pump, Technogym brand equipment

### Pool Activities

- Aqua Bike, Aqua Fitcombada, Aqua Boxing, Aqua Jump, Aqua Pol

### Beach Activities

- Sea Gym, Dart Game, Beach Volleyball, Mini Football @ Beach Area
- LesMills Body Balance, Mat Plates, TRX, Fly Yoga, Functional, LesMills Core, Sound Healing, Yoga, Stretching, Tabata and wooden gym equipments @ Jungle Gym

### Hiking

- Trail around the Carya Golf Course (4,6 km)

### Sport Center

- 2 red clay, 4 hard tennis courts
- 1 grass tennis courts (extra charge)
- 3 double & 2 single padel tennis court (extra charge)
- 2 pickleball Court (extra charge)
- 1 full-size basketball court with two hoops
- 1 artificial turf pitch
- Court and pitch lighting (extra charge)

### Water Sports\*

- Jetski, Jetcar, Parasailing, Sifly, Super Mable, Rocket, Twister, Seabob, Wakeboard, Water Ski, Flyboard, Vip Boat Trip

### Private Coaching Lessons\*

- Football, tennis, swimming lessons, personal fitness trainer

### Golf\*

- Private golf lessons, day & night golf

### Local Attractions\*

- Please contact hotel concierge desk



The Land of Legends Water Park



Jungle Gym

Outdoor evening stage shows and parties run between May 1 and October 31. The days or hours of the entertainment program may change due to adverse weather conditions, technical reasons and guest requests.

\*Extra charges apply.





## FAMILY

### Kids Facilities

- Kids & Teens Club
- Kids water park & pools
- Kids adventure park
- Kids amphitheatre
- Kids Club Restaurant
- Kids buffet and dining area in Main Restaurant
- Ali Baba's Farm

### Kids Services

- Fully equipped baby food prep corner in Main Restaurant and Kids Club
- HIPP baby food products and healthy milk options at the buffet
- Preparing guest's baby food recipes\*
- High chairs and bibs in the restaurants
- Kids menu at a la carte restaurants\*
- Baby care rooms at lobby floor, water park and beach area
- Disposable swim diapers at the pools & beach\*

### Extra Charge Kids Services

- Babysitting (only available in the Kids Club for children 2 years and older)
- Swimming lesson
- Private birthday parties
- Parent & child golf session
- Bowling & game center

### Room Kids Amenities

- Shampoo, shower gel, body lotion and bath sponge, bathrobe & slippers
- Drinks and snacks in the mini bar
- Cartoon TV channels in the rooms

### Nursery Items\*

- Baby crib / cot
- Cold mist humidifier
- Baby night lamp
- Safety bed rail for kids
- Baby audio monitor (by deposit)

### Baby Gear\*

- Stroller or twin stroller
- Transfer car seat
- High chairs and bibs
- Health Products\*
- Digital thermometer
- Nasal aspirator
- Baby nebulizer with mask

### Diapering\*

- Baby wipes
- Rash cream
- Changing mat

### Feeding Essentials\*

- Bottle warmer
- Bottle sterilizer
- Baby food jars in the mini bar
- Baby water
- Kids melamine plate & bowl
- High chair & bib

### Bath Items\*

- Baby bathtub and bath net
- Baby bath bucket and rinse cup
- Sink step stool
- Toilet potty seat
- Potty chair



Ali Baba's Farm



\*Upon request.

SUMMER 2025

*Life. Well lived.*





## KIDS & TEENS

Chuckles Kids Club offers fun-filled activities for children aged 4-12 while Teen Club is a dedicated space for teens aged 13-17. Children between the ages of 0-3.99 can join the entertainment and activities in the kids club only accompanied by their parents or their own babysitters.

### Chuckles Kids Club

- Located next to the Water Park
- Operating hours: 09.00 a.m. - 02.00 a.m.

### Activities for Age Groups

- Baby : 0-3,99 years old
- Mini : 4-7 years old
- Junior : 8-12 years old

### Kids Club Features & Activities

- Kids Reception & Registration desk
- Baby & Toddler Room (0-2.99)
- Sleeping room (0-2) and (3-5)
- Preschool Room (3-5)
- Atelier and Workshop Room
- Technology Room
- Cinema Room
- Parents & Kids Hobby Room
- Books & Fun Games Room
- Music & Dance Room
- Lego playroom
- Kitchen Workshop Room

- Princess Spa room
- Baby care and nursery room
- Indoor Playground
- Eibe outdoor playground
- Eibe kids adventure park
- Resort tour by mini train
- Kids musical shows at the amphitheater
- Daily tournaments and concept parties
- Mini disco

### Dining at Chuckles Kids Club

Kids restaurant with special kitchen, fully equipped baby food prep corner, HIPP baby food and healthy milk options at the buffet

Lunch : 12.00 a.m. noon - 02.00 p.m.

Tea Time : 04.00 p.m. - 05.00 p.m.

Dinner : 06.00 p.m. - 08.00 p.m.

### Teens Club

- Located next to the amphitheatre
- Operating hours: 11.00 a.m. - 11.00 p.m.
- Activities for Age Groups
- Teen: 13-17 years old

### Teens Club Features & Activities

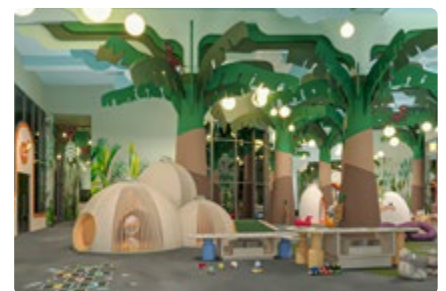
- Game room
- Dj set-up & DJ workshop
- Pinball & table tennis
- Board & card games
- Billiard & tabletop football
- Outdoor sports & activities
- Dance & Music workshop
- Concept parties



Kids Adventure Park



New Chuckles Kids Club



New Chuckles Kids Club



## WELL-BEING

Opening Time 09:00 a.m.-8:00 p.m

### Features

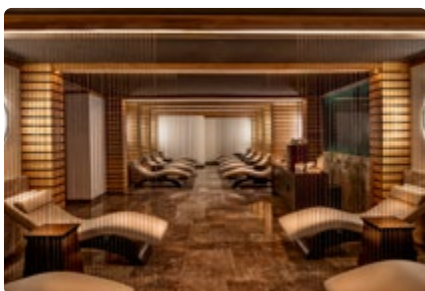
- The 5000 m<sup>2</sup> Wellbeing Center is nestled in the heart of the Regnum Carya Hotel.
- Recreation Area
- Sauna
- Steam Bath & Ice Fountain
- Longevity Centre
- 2 Bespoke Suites
- 4 Outdoor Suites
- Well-Aging Beauty Centre with High Tech Devices
- 14 Ritual Treatments Rooms
- Boutique with Luxury Brands
- Tea & Detox Lounge

### Complimentary Service Area:

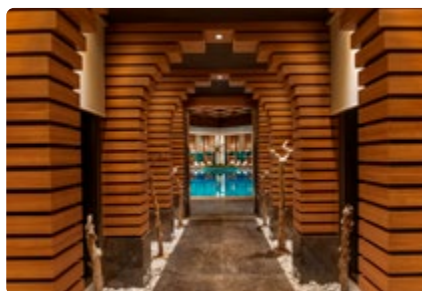
- Healthy Beverage Bar
- Turkish Bath
- Sauna
- Steam Bath
- Indoor Pool (inc.disabled lift)
- Indoor Kids Pool
- Outdoor Relax Pool
- Robe sauna
- Whirlpool
- Rest Area
- Shower Tools
- Dressing Rooms and Lockers

### Services with additional fee:

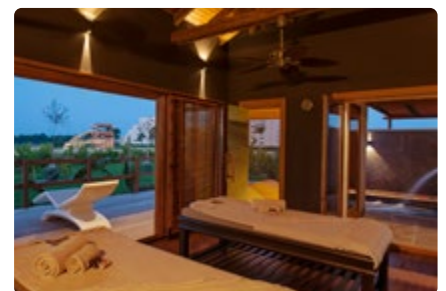
- Bespoke Face and Body Care
- Spa Pampering Massages
- Hammam Treatments
- Physical Renewal
- Holistic Rituals
- Well-Ageing & Prevention Care
- High Tech Longevity Devices
- G-Vac Therapy
- MLX Dome PLT
- Cellgym
- Vibration&Sound Therapy -RLX Satori
- Cryo Therapy LifeCube
- Sleep Therapy Dreampodap



Relaxing Area



Indoor Pool



Bali House





## BEEHIVE FITNESS CLUB

The Beehive Fitness Club located on the lobby floor of the main building is equipped with the Technogym brand advanced technology fitness equipment.

Open daily 06.00 a.m. - 08.00 p.m.

### Cardio

- 1 Technogym SkillMill
- 1 Technogym SkillRun
- 2 SkillRow
- 1 Climb
- 1 Vario
- 6 Treadmills
- 2 Ellipticals
- 1 Recumbent Exercise Bike
- 6 Skillbikes

### Weights

#### Pure Strength Series

- 1 Chest press
- 1 Incline chest press
- 1 Wide chest press
- 1 Low row
- 1 Row
- 1 Pulldown
- 1 Hip thrust
- 1 Rear kick
- 1 Linear leg press
- 1 Hack squat
- 1 Pure strength half rack

### Kinesis

- Functional Training
- Flexibility Training
- Strength Training
- Balance Training
- Coordination Training

### Selection 900 Series

- 1 Chest press
- 1 Pectoral (fly)
- 1 Vertical traction (lat pull-down)
- 1 Reverse fly
- 1 Upper back
- 1 Shoulder press
- 1 Abductor
- 1 Adductor
- 1 Leg extension
- 1 Seated leg curl
- 1 Leg press
- 1 Rotary torso
- 1 Total abdominal
- 1 Kneeling easy dips chin-up
- 1 Multipower
- 1 Bench press
- 1 Decline bench press
- 2 Scott benches
- 2 Sets of 2kg -22kg dumbbells
- 1 Set of 24kg -42kg dumbbells
- 1 Set of 10 kg-45 kg pre- loaded bar
- 1 Cable station

### Group Fitness Studios (2 studios)

- LesMills Group Fitness Studio
- SkillBike Indoor Cycling Studio

### Functional Training Area

- Horizontal bar and trx area
- Plyoboxes
- Kettlebells (4kg-24kg)
- Medicine balls (4kg-10kg)
- Bands (various resistance)
- Balance pads
- Balance boards
- 2 Bossu balls
- Ghd bench,
- Adjustable decline bench
- Lower back bench
- 2 Technogym benches
- Jump rope
- Foam roller
- Speed ladder

### Extra Charge Services

Body Fat Measurement/Analysis

### Personal Training\*

Yoga, Pilates, Boxing, Kickboxing, Weight Training, Functional Training, HIIT, LIIT, Cardio Training, Sport Specific Training (golf, tennis, football), Stretching, Kinesis Workouts



\*Extra charges apply.







## POOLS

Regnum Carya features several pools, including the main heated outdoor pool and the spa center's indoor pool. The resort's selection of pools also include a large wave pool, adult pool (18+), activity pool and shaded kids pool.

	Locations	Heating system*	Fresh Water	Tanning lounge ledge	Wood Deck	Jacuzzi	Pool lift chair	Pool Steps	Pool Finish	Depth (cm)	Size (m <sup>2</sup> )
Outdoor	Main Pool*	✓	✓	✓	✓			✓	Pebble	140	1890
	Activity Pool**	✓	✓	✓	✓			✓	Pebble	140	1540
	Wave Pool		✓						Pebble	160	2400
	Adult Pool (18+)**	✓	✓	✓	✓	✓		✓	Pebble	140	945
	Water Park Kids Pool**	✓	✓						Pebble	40	485
	Spa Outdoor pool**	✓	✓					✓	Pebble	140	130
Indoor	Spa Indoor Pool*	✓	✓			✓	✓	✓	Pebble	140	305
	Spa Indoor Kids*	✓	✓						Pebble	40	10

Pool facilities are officially open between April 1 to October 31.

Pools may be temporarily closed due to adverse weather conditions, safety and pool hygiene.

\*The main pool heating system is closed between May 1 and October 31.

\*\*Regnum Carya may turn off some of the pool heating systems on certain days due to number of guests, weather conditions and other operational reasons.



Water Park Kids Pool



Activity Pool



Adult Pool





## BEACH LIFE

We've created a beautiful private white sand beach along the sparkling cool waters of the Mediterranean for you.

### Beach Features

- Blue flag awarded
- 450 m white sandy beach
- Cozy sun loungers & kids sun loungers
- Tanning beds in wooden boats
- Disabled sun lounge area
- Charging station

### Beach Activities

- Sea Gym, Dart Game, Beach Volleyball, Mini Football, LesMills Body Balance, Mat Plates, TRX, Fly Yoga, Functional, LesMills Core, Sound Healing, Yoga, Stretching, Tabata and concept parties

### Beach Services

- Dining services
- Drink service to sun loungers
- Beach towel service
- Cold towel service
- Sunglasses cleaning services
- In-resort shuttle
- Beach security

### Beach Facilities

- Adult Beach Club & Night Club 18+
- Sandal Restaurant
- Palm Beach Club
- Jungle Gym with wooden equipment
- Food Kiosks

### Extra Charge Beach Services & Facilities

- Water sports activities
- Shisha service
- Bottle champagnes & spirits
- Exclusive shellfish & seafood
- Alia Beach Club
- Riviera Beach Club
- Greek Restaurant
- Daily beach & pier pavilions rental

### Pavilion (Cabana) Details:

- Operating hours 9.00-19.00
- Butler service to all pavilions
- Lunch service (12.00-17.00)
- Beverage menu with hotel concept
- Mini bar, safe box, shower
- Bathrobes and towel
- Butler call button
- Over-the-water dock hammock on pier

Please note that beach facilities are officially open between May 1 through October 31.



Alia Beach Club



Beach Pavillon



Pier Pavilion





# CARYA GOLF CLUB

The first and only fully lighted golf course in Europe

**Designer:** Peter Thomson / TPL

**Course opening date:** 10.11.2008

**Course:** The first fully lighted golf course of Europe and the one and only heathland style golf course built in Turkey's Mediterranean coast.

**Location:** Belek - Antalya

**Area:** 760.000 m<sup>2</sup>

**Grass:** 420.000 m<sup>2</sup>

**Club rules:** Soft spikes only

**Handicap (Men):** 36

**Handicap (Women):** 36

**Pro Shop:** Bogner, Galvin Green, RLX, Under Armour, Ruck Maul, Honma, Taylor Made, Ecco, Porsche Design brands  
350 m<sup>2</sup> proshop

**Golf Lessons:** Available in Turkish, English, Russian and German languages by P.G.A qualified and TPI certified Professionals, lessons with Trackman

**Greens:** Tiff Eagle, Average per green approx. 600 sq m

**Tees:** 4 Tees per Hole

**Fairways:** Bermuda 419, Challenging and undulating terrain with plenty of strategic options

**Bunkers:** 84 Bunkers with white quartz sand

**Lakes:** 4 lakes in 18 holes courses

**Diving Range:** Double ended with a unique state of the art academy building with and 52 bays with Taylor Made Performance Lab.

**Putting Green:** 4 putting greens, one of them the largest green in the world

A) 4100 m<sup>2</sup> – 165 metres long

B) 950 m<sup>2</sup>

C) 710 m<sup>2</sup>

D) 250 m<sup>2</sup>

**Chipping & Pitching Green:** 4 Chipping greens with 50 people capacity, 4 pitching greens, 7 target practice greens, 4 training bunkers, 1 fairway practice bunker

**Golf cars:** 70 golf cars

**Rental Clubs:** 120 TaylorMade Sim Max & Stealth, M6, Qi10



Rooftop Tee







# NATIONAL GOLF CLUB ANTALYA

The first and still the best...

**Designer:** David Feherty / David Jones

**Course opening date:** 18.11.1994

**Course:** 18-hole heathland course set in a pine forest

(IRMAK AND TUNA COURSES)

**Location:** Belek - Antalya

**Area:** 1.000.000 m<sup>2</sup>

**Grass:** Bermuda 419, Lolium Perenne, Tifdwarf Bermuda and Poa Trivialis.

**Club rules:** Soft Spikes. National Golf Club is a non – metal spike facility.

**Handicap (Men):** 36

**Handicap (Women):** 36

**Pro Shop:** Bogner, Galvin Green, RLX, Under Armour, Ruck Maul, Honma, TaylorMade, Ecco, Porsche Design Brands 110 m<sup>2</sup> Proshop

**Golf Lessons:** Available in Turkish, English, Russian and German languages by P.G.A Qualified Professionals, Lessons with Trackman

**Greens:** Tifdwarf Bermuda. Approximately 500 square metres per green

**Tees:** 4 Tees per Hole

**Fairways:** Bermuda 419, challenging and undulating terrain with plenty of strategic options.

**Bunkers:** 36 white quartz sand bunkers

**Lakes:** 7 Lakes

**Driving Range:** One side 260m x 110m, max. 80 pax

**Putting Green:** 800 m<sup>2</sup> – 3 putting greens 40 metres long

**Chipping & Pitching Green:** 1 Chipping green & 1 pitching green, 3 training bunkers

**Golf Cars:** 60 golf cars

**Rental Clubs:** 15 Taylormade M2, M4, M5, M6







## M.I.C.E. & WEDDINGS

Rooms covering an area of 7500 m<sup>2</sup> with high ceilings and receiving natural light, equipped with advanced visual, audio and light systems technologies. Accommodating private meetings for different sizes of groups in this special area that can be divided into different sections.

### Meetings & Conventions

- 7500 m<sup>2</sup> and two-storey convention center
- Enclosed guest drop-off area
- Exclusive reception within the convention center
- Valet service & bellboy service
- Welcome drink service
- Indoor access to hotel lobby & rooms
- 2100 m<sup>2</sup> column-free Carya Grand Ballroom
- 750 m<sup>2</sup> foyer on the ground floor
- 1000 m<sup>2</sup> column-free Pinus Ballroom
- 7 Breakout rooms
- 1200 m<sup>2</sup> foyer on the first floor
- Expandable doors suitable for all types of new vehicle launches
- Loading areas providing direct access to the ballrooms
- Accessibility for disabled guests
- Backstage dressing rooms
- Direct access from car park
- Cloakroom service
- Storage rooms
- Security service

### Catering Services

We offer our full-range of indoor and outdoor catering services that includes complete food preparation and presentation for special events, weddings, festivals and galas plus all setup, clean-up, tear-down and requested amenities.

### Transportation Services

- Hotel VIP & shuttle vehicles
- Rental cars, taxi
- Helicopter transfer

### Business Center Services

- Computer, photocopying
- Phone, printing, scanning,
- Paper shredding, lamination
- Wireless internet access
- Safe deposit box

### Small Social Groups

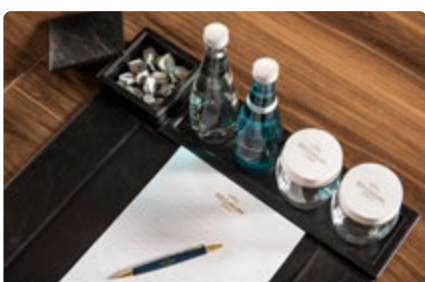
- We will be happy to decorate a separate area in the hotel where you can celebrate your special occasion with friends and family

### Weddings at Regnum Carya

- Coordinating and planning
- Wedding butler service
- Ceremony
- Photography and memories
- Wedding florist service
- Make up and hair services
- Wedding gala dinner
- After party
- Honeymoon concept

### Premium Spaces & Venues

- White sand beach
- Seaside venues
- Waterfall area
- Wooded park area
- Private villa facilities
- Fine dining restaurants
- Ballrooms







## CONVENTION CENTER

We are very proud to have been chosen as the central hotel for the G-20 SUMMIT 2015 in ANTALYA and to have hosted world leaders while duly representing our country.

	Function Rooms	Dimensions				Capacities					Daylight
		Area Sq m	Length	Width	Height	Theatre	Classroom	Boardroom	Cocktail	Banquet	
Ground Floor	<b>Venue</b>										
	Carya Grand Ballroom	2100	35	60	7,20	2000	1200		1900	1600	✓
	Carya I	700	35	20	7,20	600	375		600	470	✓
	Carya II	700	35	20	7,20	700	410		650	500	✓
	Carya III	700	35	20	7,20	600	375		600	470	✓
	Carya Pre-Function Area	750			4						
	Pinus Ballroom	1020	32	32	5,20	900	550	100	900	560	✓
	Pinus I	450	32	15	5,20	400	180	70	400	240	✓
	Pinus II	550	32	17	5,20	450	320	70	500	320	✓
	Pinus Pre-Function Area	460			5,20						
First Floor	Citrus Room	40	8	5	5,20	30	20	13			✓
	Laurus Room	110	15	7	4	100	60	33			
	Laurus I	55	8	7	4	50	30	17			
	Laurus II	55	8	7	4	50	30	17			
	Ficus Room	110	15	7	4	100	60	33			
	Ficus I	55	8	7	4	50	30	17			
	Ficus II	55	8	7	4	50	30	17			
	Cornus Room	90	10	9	4	90	54	24			✓
	Tilla Room	105	11	9	4	90	54	24			✓
	Punica Room	72	9	8	4	60	36	15			✓
Salix Room	64	13	5	4	50	30	17			✓	

Please note that all function room dimensions and capacities are approximate.





## REGNUM FOOTBALL CENTER

With three football fields designed to meet FIFA's official standards, Regnum Carya offers a top-class training facility for sports lovers seeking to become the football stars of tomorrow.

- 3 Football pitch with floodlit system
- All fields meet FIFA standards (68x105m)
- 2 separate dressing rooms, 1 storage room, 1 referee room
- Grandstand for 475 persons
- VIP lounge for 25 persons
- Rinowo Tifway & British perennial ryegrass
- High absorption surface against rainy weather (fish bone drainage system)
- Rainbird Smart Irrigation Systems
- Four different size goals for each field
- Football filming towers
- 3 Circuit and goalkeeper fields (40x25m)
- Branding boards around pitches for privacy of clubs
- Private line drawing service for teams (upon request)
- Separate entrance and bus parking area
- Loading areas providing direct access to the facilities
- Private direct access to the football fields from the dressing room
- 7/24 staff & greenkeeper assistance in football centre
- Complimentary shuttle services
- Training materials (dummy, ground marker etc.)







## LEAF LOYALTY CLUB

You can benefit from many exclusive services and discounts with the Leaf Loyalty Club, the loyalty program that only the most distinguished guests of Regnum are members of. The Leaf Loyalty Club program offers special discounts for many services including helicopter rental, hotel transfer services, reservations, A la Carte restaurants, and private sports lessons.

Please visit our website for more details and all privileges.

### PRIVILEGE SERVICES FOR REGNUM CARYA GUESTS



Green Card  
0 - 29 Points



Silver Card  
30 - 150 Points



Gold Card  
151 - 300 Points



Ruby Card  
301 Points and Over

	Green Card 0 - 29 Points	Silver Card 30 - 150 Points	Gold Card 151 - 300 Points	Ruby Card 301 Points and Over
SPA treatments	-	-	10%	15%
Pavilions (cabana) rental	-	5%	10%	15%
Buggy rental	-	5%	10%	15%
Food & Beverage extras	-	5%	10%	15%
Laundry service	-	5%	10%	15%
Private coaching lessons	-	5%	10%	15%
Babysitter	-	5%	10%	15%
Helicopter rental	-	5%	10%	15%
Transfer service	5%	5%	10%	15%
Proshop	5%	5%	10%	15%
Teppenyaki, dry aged steaks, premium food and beverage	-	5%	10%	15%
Regnum Carya A la Carte restaurants cover charge	-	5%	10%	Complimentary
Alia Beach Club (beach, breakfast, lunch or dinner)	-	5%	10%	Complimentary
Golf Academy	-	-	-	Complimentary
Late check-out (upon availability)	-	-	Complimentary	Complimentary
Regnum The Crown Rooftop Restaurant & Bar	-	5%	10%	15%
Regnum The Crown A la Carte Restaurant cover charge	-	5%	10%	15%
Riviera Beach Club (daily package, breakfast, lunch or dinner)	-	5%	10%	15%

Regnum reserves the right to change or revoke the discounts and privileges offered by the loyalty system at any time without prior notification.



## LOCAL ATTRACTIONS

[goturkeytourism.com](http://goturkeytourism.com)

### Aspendos Ancient City - 22 km

Situated in the town of Serik in Antalya province, Aspendos impresses visitors with its elegant amphitheatre and other ancient remains. The theatre of Aspendos is one of the most magnificent and well-preserved buildings in the world built by the Romans.

### Perge Ancient City - 24 km

The magnificent ancient city of Perge is set amidst the beauty of Antalya. It is located 2 km away from the main road of Antalya - Alanya and 15 km from Antalya city centre. Visitors can see some of the excavations continuing on the site.

### Kursunlu Waterfall - 30 km

Kursunlu Waterfall is a unique place where a cascade connecting seven ponds falls from 18 m in height against a backdrop of green nature. It is one of the most attractive landscapes in terms of lush plants and picnic areas in Antalya.

### Hadrian's Gate of Antalya - 39 km

Hadrian's Gate (Three Gates) was built as the main gate of Antalya during the reign of the Roman Emperor Hadrian (117-138 BC). The gate today stands in its old glory and is one of the best-preserved historic structures in Antalya.

### Old Town (Kaleiçi) - 42 km

Kaleiçi, the old city centre of Antalya, combines the aesthetics of old and new. In the heart of Antalya, Kaleiçi is one of the most frequently visited areas of the city with its historic buildings, entertainment facilities, hotels, restaurants and bars.

### World's Biggest Tunnel Aquarium - 42 km

Antalya Aquarium, which is considered as the biggest tunnel aquarium in the world, is one of the most lively attraction centres in the city. An inspiring adventure, discover your imagination at the Antalya Aquarium.

### Antalya Museum - 45 km

Located in Konyaaltı, the Antalya Museum or Antalya Archeological Museum is one of Turkey's largest museums. It includes 13 exhibition halls and an open-air gallery. It covers an area of 7,000 m<sup>2</sup> (75,000 sq ft) where 5,000 works of art are exhibited.

### Side Ancient City - 48 km

Side is among the best known ancient cities in Turkey. Side was a port in ancient times and its name means pomegranate. The amphitheatre built on colonnaded arches is the biggest in the area. Among the ruins are the agora, a gymnasium, the Apollo Temple on the seaside, fountains and the necropolis.

### Termessos National Park - 61 km

Gulluk Mountain (Termessos) National Park is one of the most spectacular areas in Turkey, situated at the foot of the Taurus Mountains to the north-west of Antalya. The national park is 34 km away from Antalya city centre.



Aspendos



Old Town (Kaleiçi)



Side Ancient City





# PRIVILEGE SERVICES

## TERMS & CONDITIONS

Complimentary privilege services are Regnum Carya's gifts to guests and not included in the "All Inclusive" accommodation.

These services are non-transferable and cannot be exchanged for cash in part or full, and are valid during period of stay

For further information, please visit the official website.

### Helicopter Transfer

- Complimentary round trip (1 arrival & 1 departure) helicopter transfer is valid for guests staying a minimum of 7 nights or more in the Crown Villa ve Tiara Villa
- Helicopter transfers are available between sunrise & sunset hours and all transfers beyond these hours will be carried out with our VIP vehicles by land.
- The hotel shall not be held responsible for helicopter transfers that cannot be carried out due to adverse weather conditions and technical breakdowns and/or during maintenance periods and therefore no compensation can be claimed against the hotel if this service cannot be provided due to such reasons.
- Helicopter passengers are limited to 4 persons. Luggage is not allowed on board. For airport transfers, luggage is carried by land free of charge.
- Night flight is not possible.
- Please note that the complimentary helicopter transfer service is offered only to Crown Villa and Tiara Villa guests and will be provided depending on the terms of the contract made with the sales department.

### VIP Airport Transfer

- Round trip (1 arrival & 1 departure) VIP transfer is valid for guests staying a minimum of 7 nights in the Crown Villa ve Tiara Villa

### Airport Transfer

- Round trip (1 arrival & 1 departure) airport transfer is valid for guests staying a minimum of 4 nights and for bookings made directly through the sales

department (+90 444 64 23 / [direct@regnumhotels.com](mailto:direct@regnumhotels.com)) or via the Regnum Hotel website

### Service details:

- Arriving passengers should e-mail their flight information (flight date, arrival time, flight number, confirmation number) to [reservationbelek@regnumhotels.com](mailto:reservationbelek@regnumhotels.com) and [transfer@regnumhotels.com](mailto:transfer@regnumhotels.com).
- Outgoing passengers should make a reservation through transfer services with their flight information (flight date, departure time, flight number, confirmation number).
- For international flights, the hotel-airport transfer time is 3 hours prior to the time of departure.
- For domestic flights, the hotel-airport transfer time is 2 hours prior to the time of departure.
- The hotel-airport transfer service will wait a maximum of 15 minutes after the scheduled hotel pick-up time.
- Regnum Carya shall not be held responsible for delayed flights and cancellations.
- Transfer reservations may be cancelled at least 24 hours in advance, cancellations cannot be made on the same day.
- Free VIP transfer service is only available from Antalya International Airport

### The Land of Legends Theme Park

- Complimentary access and entrance to The Land of Legends (Depending on park operating days)
- Unlimited free entrance and shuttle

service to The Land of Legends Theme Park is valid for hotel guests staying a minimum of 3 nights or more in all room types or villas

- All food and beverage services are extra charge and room credit account is not valid
- Park entry wristbands cannot be transferred or sold to third parties.
- Bringing any kind of outside food, alcoholic or nonalcoholic beverages into the park area is not allowed.
- The Land of Legends Theme Park is a third-party business partner
- This service is not available after room check out

### Real Madrid Foundation Clinic Turkey (June-September)

- Real Madrid Foundation Clinic Turkey is an extra service and not included in the "All Inclusive" accommodation.
- The programme is for children between 6 and 16 years old.
- Trainings are held at Regnum Carya's Professional football fields.
- The programme is one week and the trainings are held for 5 days a week, from Monday until Friday.
- The trainings will be held with Real Madrid Foundation coaches who are selected by the Real Madrid F. C. Academy Director.

### Villa Lounge Working Hours

- Lounge check-in / check-out times operation hours are between 09.00 a.m. and 11.00 p.m. for Pearl Pool Suite or Pearl Pool Family room



## HEALTH - SAFETY - ENVIRONMENT

### Hotel Safety And Security

Regnum Hotels are the first and only resort hotels in Turkey to have been awarded the Safehotels Executive Certificate, the highest degree of certification granted by Safehotels, a global hotel safety certification company that performs audits in 60 countries worldwide. Contents of Safehotels certification: Hotel Property and Guest Security / Process, Procedure, Training and Management / Security Equipment/ Fire Equipment / Fire Procedures and Training / Crisis Management

### Guest Rooms

Regnum Hotels are the first hotels in Turkey to implement The Hygienic Room Program by Diversey Consulting, one of the world's leading companies for hygiene solutions, as well as the first hotel awarded with certification. Regnum Hotels are certified by the Potema bed cleaning system, the world's only registered bed cleaning service.

### Food Safety

We apply the ISO 22000 Food Safety management system in our facility where every process from the acceptance of food to its presentation is continuously monitored by the Food and Environmental Engineers in our company. Regnum Hotels have been audited at all stages from the acceptance to presentation of food products and has been certified by ISIS Turkey (International Inspection System). Contents of certification: Bars, kitchens, food production areas and food storage rooms, monthly checks and reports

### Swimming Safety

Fully trained lifeguards are on duty at all times during red & yellow flags at the pool and beach

### Spa Center & Gym-Kids Club Hygiene

Regnum Hotels are the first hotels in Turkey to implement and receive certification for Diversey Consulting's The Hygienic SPA & Gym Audit and The Safe & Hygienic Mini Club Audit programs. Regnum Hotels are the

only accommodation facility in the Mediterranean Region that still continue to implement these programs.

### Hotel Hygiene

To remain compliant with WHO and CDC guidance, Diversey provides the necessary hygiene audits that maintain the highest levels of cleaning and disinfection for keeping employees and guests safe.

### Laundry Hygiene

Professional laundry service is provided on site. All hotel textiles and laundry are washed by our expert team by taking cross contamination measures. Diversey Clax Personril, a chemo - thermal disinfection product recommended by international authorities for hygienic washing, is used for laundry and for cleaning room textiles

### Electric, Fuel & Power

The hotel operates on 220 volts and 50 hertz. In the event of disruption to the electricity supply, the hotel's total 5.750 KVA emergency generators will automatically operate, to ensure that all fire & life safety equipment will continue to operate. The fuel oil tank of the emergency generator can keep the generator running for 36 hours. Our facility generates a total of 6.519 MWT of electricity with a trigeneration system.

The Solar Power Plant (SPP) project generates approximately 18.000 MW of electricity annually.

### Water

The distributed water complies with the World Health Organization standards for water. The hotel has at anytime a 2 days storage supply of water. The hotel has Water Safety certified by ISIS Turkey (International Safety Inspection System) Contents of certification: Pools, water storages, water system and Legionella monthly check and report

### Emergency Care

Emergency ambulance service is available at Regnum Hotels 24 hours a day, seven days a week

### Sustainability & Environment

Regnum Hotels have earned the "Sustainable Tourism Certificate" by fulfilling all the requirements for the certification set forth by the Global Sustainable Tourism Council (GSTC), a leading body in developing international standards for sustainability in the tourism sector under the leadership of the Ministry of Culture and Tourism and the Turkish Tourism Promotion and Development Agency (TGA).

We are the first hotel business in Turkey to measure and verify our carbon and water footprint as part of the Environmental Sustainability Project. In addition, we use the smart scale system with "Fazla" in the Food Waste Mapping project and prevent waste at its source. The health of our animal friends in our facility are regularly checked by veterinarians. Regnum Hotels are the first golf hotel awarded with the LEED Gold Certificate of Europe. LEED (Leadership in Energy and Environmental Design) is an internationally recognized green building certification system. Regnum Hotels have received the International "Blue Flag 2020" beach award by the Turkish Foundation for Environmental Education (TUR.EV) and the Green Star award (Environmentally Friendly Establishment) by the Turkish Ministry of Tourism and Culture

"ReGreen" with the participation of volunteer staff, «Move-on Regnum / Take action for the future today!» has been involved in many environmental and social responsibility projects since 2018.

### Quality Management System

Regnum Hotels are certified by Bureau Veritas, an international certification body. Our Quality certificates include: ISO 9001 Quality Management System, ISO 14001 Environmental Management System, ISO 45001 Occupational Health and Safety Management System, ISO 22000 Food Safety Management System, ISO 50001 Energy Management System, ISO 10002 Customer Satisfaction Management System





## ABOUT REGNUM CARYA

Regnum Carya, situated on a perfect and white sandy beach in the Mediterranean, is a unique and private heaven in Belek-Antalya, Turkey.

This luxurious, all-inclusive, family friendly and five-star resort, only 30 minute's drive from the International Airport in Antalya, provides an excellent accommodation opportunity. Furthermore, the resort always offers the highest level of comfort with accommodation ranging from 62 square meters large standard rooms to the Crown Villa with 3500 square meters.

Promising an experience on par with the best five-star resorts in Turkey, Regnum Carya provides its guests with the opportunity to swim outdoors during both summer and winter months, enjoy a holiday full of sports, relish the excellent scenery of the Mediterranean and old pine forests, and taste the most special delicacies of the world cuisine with 10 different fine dining à la carte restaurants and a buffet restaurant.

In addition, golf enthusiasts are invited to play golf at two different courses. You should try Carya Golf Club, Turkey's first and only floodlit golf course with 18 holes which allows nighttime golf, and the National Golf Club with 18 holes. With two football grounds designed in accordance with the FIFA standards, Regnum Carya also provides various opportunities also for training camps for professional football teams.

At our luxury resort, where we hosted the G-20 World Summit in November 2015, there is a first-class 7500 square-meter convention centre with a private entrance, a 2100 square-meter column free ballroom and 13 meeting halls which receive natural light. Regnum Carya is the first golf hotel awarded with the LEED Gold Certificate of Europe.





**Property**

Regnum Carya

**Category**

5+ Golf & Spa Resort Hotel

**Concept**

Luxury all inclusive

**Operation**

12 months

**Summer Season\***

April 25 – October 31

**Winter Season**

November 1- March 31

**Opening Date**

April 1, 2014

**Total Room**

557

**Total Area\*\***

1.050.000 m<sup>2</sup>

**Ownership**

Carya Turizm Yatırımları A.Ş.

**Investor**

Fikret Öztürk

**Chairman**

Ali Şafak Öztürk

**Vice President & Sales Director**

Eser Demir

**Hotel Director**

Tolga Yılmaz

**Architect**

Mert Yanpal - Rasyonel Tasarım

**Interior Design**

Murat Denizaltı - Arketipo Design

**Landscape Architecture**

Gregg R. Sutton, PLA - EDSA

**Address**

Regnum Carya  
Belek Turizm Merkezi  
Kadriye Mahallesi, Üçkum Tepesi Mevki  
07525 Serik-Antalya / Türkiye

**Website**

regnumhotels.com

**Email**

info@regnumhotels.com

**Social Media**

@f t p y i / regnumcarya

**Marketing Assets**

stock.regnumhotels.com/

**Telephone**

+ 90 242 710 34 34

**Direct Sales**

+ 90 444 64 23  
direct@regnumhotels.com

**Gps Coordinates**

36°51'19"N 31°00'30"E

Regnum Carya Hotel reserves the right to make changes, corrections, and/or improvements to the information, and/or to the products, programs, and/or services described in such information, at any time without prior notice.

\*Beach facilities are officially open between May 1 through October 31.

\*\*Including 18 holes Carya Golf Club.



